

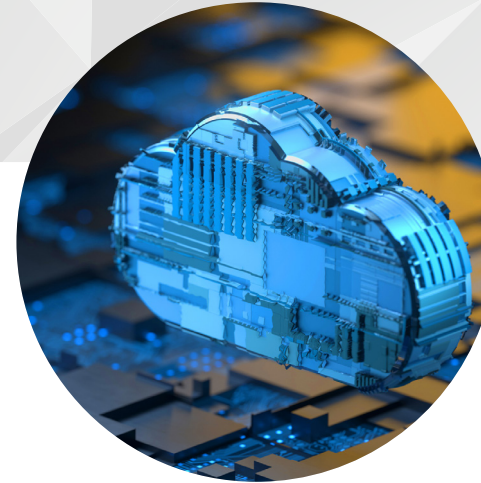
Centralize visibility and simplify policy management with Tufin-Zscaler Cloud Firewall integration

Today's workforce is globally distributed and employees are working from everywhere. With more workloads and applications now in the cloud, keeping the enterprise secure can be a challenge, as employees go directly to the Internet, bypassing traditional security controls. Managing security policies via siloed tools leads to incomplete visibility, and complex, time-consuming daily operation.

Tufin's integration with the Zscaler Advanced Cloud Firewall, part of the Zscaler Zero Trust Exchange, provides admins with centralized visibility into Zscaler Secure Access Service Edge (SASE) policy rules alongside other vendors' policies, to help simplify and standardize security policy management across the hybrid cloud, directly from the Tufin console.

The Zscaler Zero Trust Exchange provides a full security platform in the cloud, allowing your entire workforce to be secure, regardless of their location. Zscaler ensures users have consistent protection no matter where, or on what device, they connect from. Zscaler Cloud Firewall enables fast and secure off-network connections and local Internet breakouts for all your user traffic, without appliances. Zscaler Cloud Firewall elastically scales across all ports and protocols to handle all your cloud application traffic.

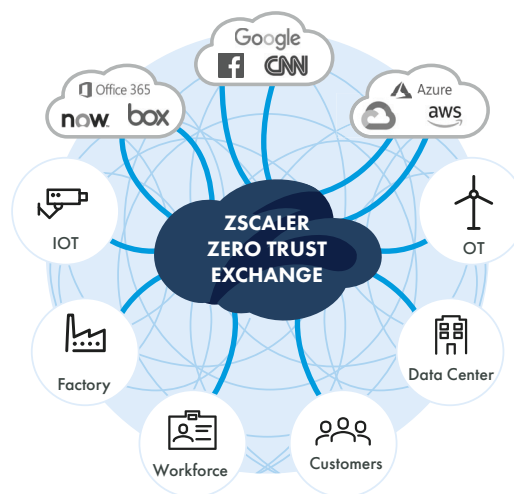
Tufin Orchestration Suite (TOS) is a complete solution for automatically designing, provisioning, analyzing, deploying, and auditing network security changes from the application layer, down to the network layer. The Suite provides advanced automation capabilities to increase business agility, improves accuracy through elimination of manual errors, and ensures continuous compliance via a single console. Tufin's unified security policy empowers network and IT security teams to effectively safeguard complex, heterogeneous environments through a central interface for defining and enforcing policy controls over firewalls, switches, Software Defined Networking (SDN), private and public cloud platforms and Kubernetes, down to any level of segmentation.



Benefits

- Reduce complexity and increase control by managing enterprise security policies, all from a single console
- Faster resolution of security and connectivity issues by identifying overly permissive rules, rule certification status, and more
- Easy detection and troubleshooting analysis with Zscaler Cloud Firewall rule change tracker – view and compare policy changes at any point in time
- Reduce time and effort invested in audit preparation, whereby auditors gain instant visibility into policy changes

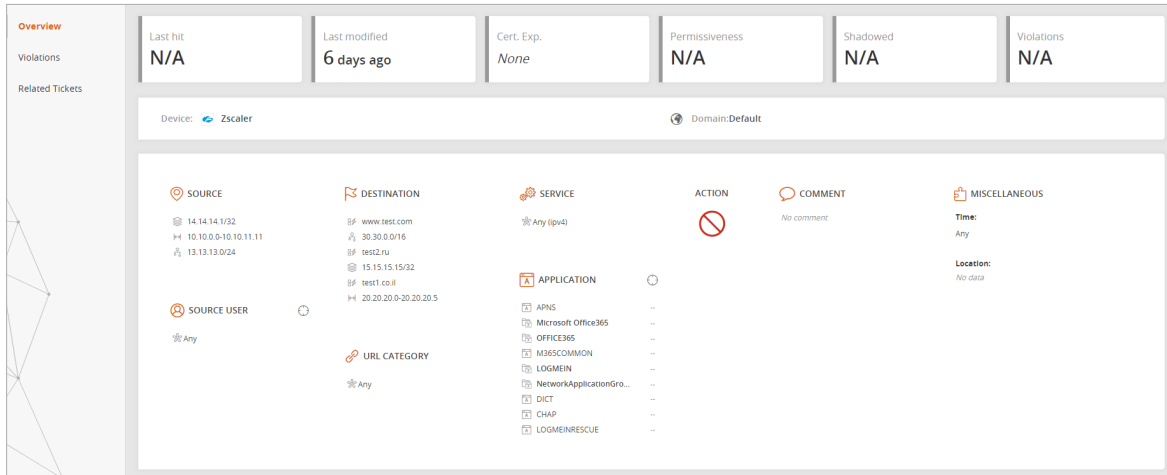
Zero Trust Architecture



Key features include:

Rule Viewer

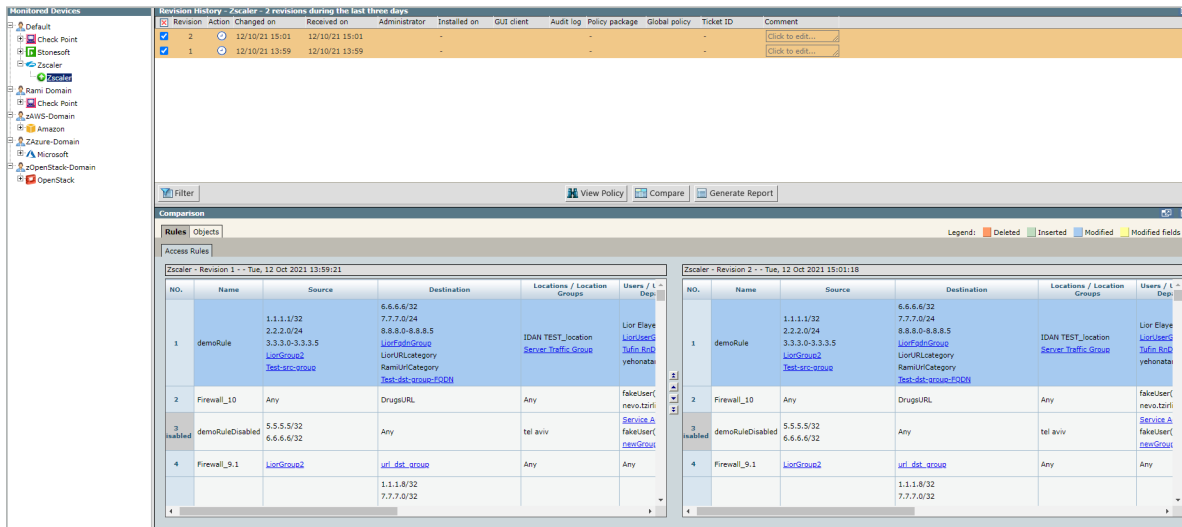
Tufin's Rule Viewer enables network administrators to gain an instant view of Zscaler Cloud Firewall rules directly from the Tufin console, for fast analysis. Users can view rule attributes—sources, destinations, users, applications. The Rule Viewer also provides rule metadata, such as when the rule was last modified, the certification status if rule certification is being enforced via Tufin, and if the rule is overly permissive and should therefore be modified or removed.



Tufin dashboard: Zscaler Cloud Firewall rule viewer

Rule Change Tracker

To ensure continuous compliance and enable faster troubleshooting, Tufin monitors and highlights Zscaler Cloud Firewall rule changes -- what was changed, when, by whom, and whether there's a comment or a reference associated with it. Tufin records every policy revision, maintaining a complete policy history as it evolves over time. Administrators can quickly retrieve and view the Zscaler policy as it existed at a previous point in time. A side-by-side comparison helps admins review changes to identify and fix misconfigurations. This can be invaluable when a change unexpectedly blocks access to a critical asset, enabling auditors to immediately view what has changed since the last audit.



Tufin dashboard: Revision history and change comparison

Rule filter

Admins can filter rules by locations, apps, URL category, and users, for faster resolution of security and connectivity issues.

The screenshot shows the Tufin SecureTrack Rule Viewer interface. At the top, there's a search bar with the filter 'vendor = 'ZSCALER'' and a 'Devices' button. Below the search bar, it indicates '47 Rules were found'. The main area displays a list of rules, including '10 | Zscaler Proxy...', '11 | Firewall_7', '12 | Firewall_4', and '13 | Office 365 O...'. Each rule entry includes details like source and destination IP addresses, user groups, and a 'Last hit' status. The 'Permissiveness' column shows 'N/A' or 'High'.

Tufin dashboard: Rule viewer

To learn more about the Tufin-Zscaler integration, [click here](#).

About Tufin

Tufin (NYSE: TUFN) simplifies management of some of the largest, most complex networks in the world, consisting of thousands of firewall and network devices and emerging hybrid cloud infrastructures. Enterprises select the company's Tufin Orchestration Suite™ to increase agility in the face of ever-changing business demands while maintaining a robust security posture. The Suite reduces the attack surface and meets the need for greater visibility into secure and reliable application connectivity. With over 2,000 customers since its inception, Tufin's network security automation enables enterprises to implement changes in minutes instead of days, while improving their security posture and business agility.

www.tufin.com



tufin
The Security Policy Company.

Copyright © All rights reserved. Tufin, Unified Security Policy, Tufin Orchestration Suite and Tufin logo are trademarks of Tufin. All other product names mentioned herein are trademarks or registered trademarks of their respective owners. You may not copy, reproduce, photograph, translate, transmit, make available to the public, make derivative works, perform in public, rent, broadcast or make any commercial use of the publication in full and / or in part without prior written approval.

DP20211202